

# IHNC LOCK REPLACEMENT STUDY

## INLAND WATERWAYS USERS BOARD MEETING NO. 100

Brad Inman  
Branch Chief, Projects and Restoration  
Branch  
U.S. Army Corps of Engineers  
PPMD/MVN  
20 July 2023

*World-Class Delivery...  
Real-World Impact!*



US Army Corps  
of Engineers®





# IHNC LOCK REPLACEMENT - OVERVIEW



**Authorization:** Authorized for replacement in 1956 once economically justified and modified by Section 844 of the Water Resources Development Acts (WRDA) of 1986, amended by WRDA 1996 (authorizing the Community Impact Mitigation Plan), and WRDA 2007 (authorizing the Transportation Mitigation Program).

**Purpose/Description:** Project authorization is for a new, 110' x 900' replacement lock.

**Schedule:** Study resumed on four key focus areas upon receipt of \$2.797M in June 2022 with a completion date of 05 FEB 2025 (Director's Report).

- Community Impact Mitigation Plan (CIMP)
- Transportation Mitigation Plan (TMP)
- Hazardous, Toxic, and Radioactive Waste (HTRW)
- Amended Memorandum of Agreement (AMOA)

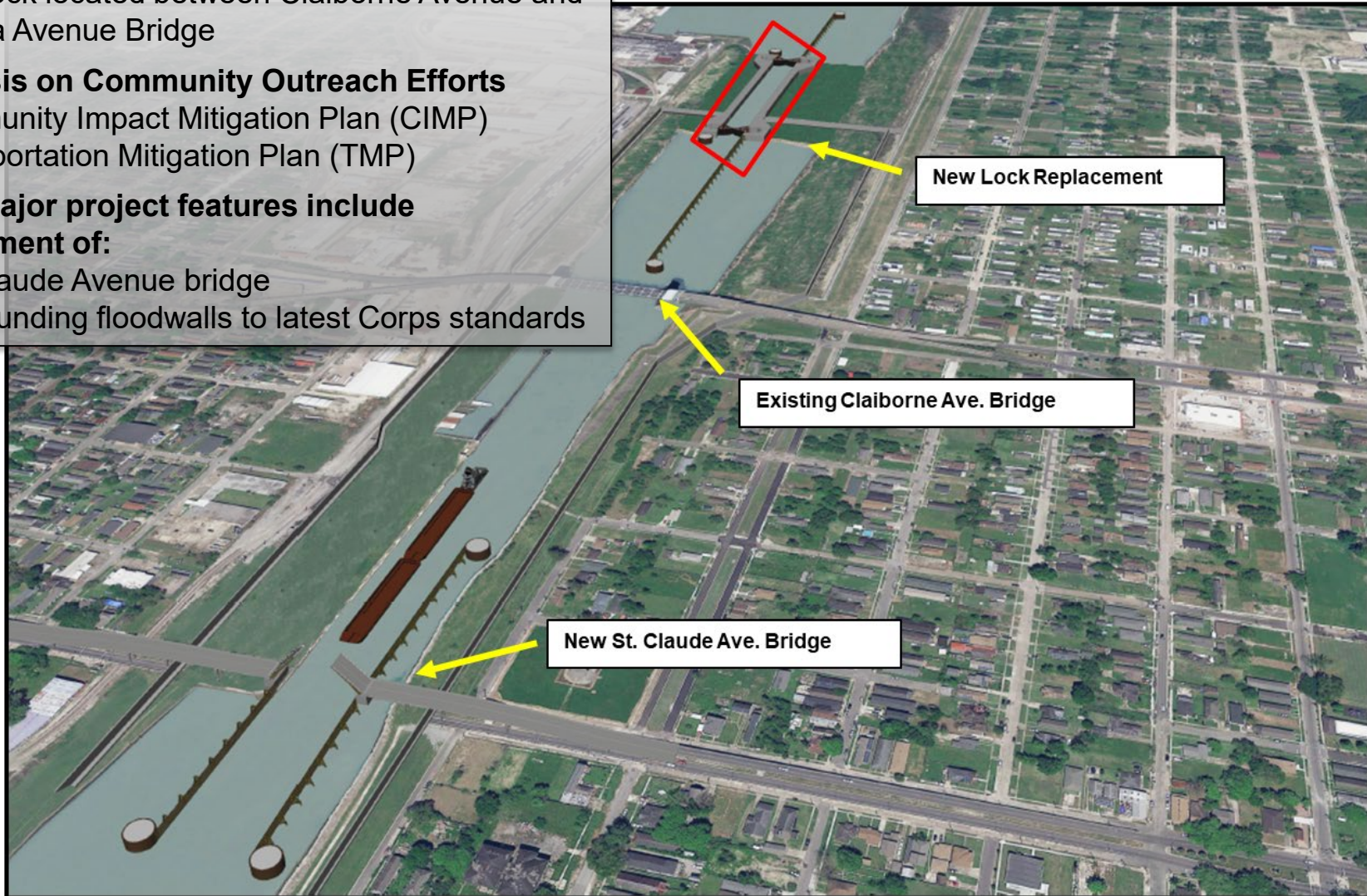
**Cost:** TBD in study update. Previous cost estimate (\$1.22B) is from 2019.



# PROJECT OVERVIEW OF SCOPE



- **Lock Details**
  - New lock anticipated to be 900' x 110' x -22'
  - New lock located between Claiborne Avenue and Florida Avenue Bridge
- **Emphasis on Community Outreach Efforts**
  - Community Impact Mitigation Plan (CIMP)
  - Transportation Mitigation Plan (TMP)
- **Other major project features include replacement of:**
  - St. Claude Avenue bridge
  - Surrounding floodwalls to latest Corps standards







# RECENT PROJECT UPDATES: MAJOR FOCUS AREAS



## TRANSPORTATION MITIGATION PROGRAM (TMP): **PCXIN, ERDC**

- **MAR 2023:** Ship Simulation
- **JUN 2023:** Tabletop Exercise
- **Ongoing:** Vehicular Transportation Modeling

## COMMUNITY IMPACT MITIGATION PLAN (CIMP): **CPCX, CDM Smith, Bright Moments**

- **Ongoing:** Targeted Community Engagements
- **MAY 2023:** Contractor Kickoff Meeting
- **JUN-NOV 2023:** Stakeholder Engagement: Two-Phased Approach
  - Phase I: Receive input on stakeholders' vision for their communities
  - Phase II: Close feedback loop and provide details regarding anticipated impacts and mitigation ideas



14 JUN 2023: Tabletop Model Exercise at ERDC



16 MAY 2023: CIMP Kickoff Site Visit to IHNC Lock



# CHALLENGES AND MITIGATING STRATEGIES



## KEY ISSUES

- **Construction of the project is strongly opposed by local citizens**
  - Vehicular traffic congestion
  - Environmental impact concerns
- **High risk for future litigation due to public perception of project impacts**
- **Risk for construction cost increases due to inflation**
  - 10% Design
  - Higher contingencies



## MITIGATION STRATEGIES

- **Build community trust and acceptance through continued engagement**
- **Promote clarity and consistency in public messaging for better understanding**
- **Informing the public of changes to the design and mitigation measures**
  - New Community Impact Mitigation Plan
  - Transportation Mitigation Plan



# CLOSING



Brad Inman, [Brad.I.inman@usace.army.mil](mailto:Brad.I.inman@usace.army.mil)

